

◆ Cully Neighborhood Survey Results ◆

Prepared by Jennifer Dill and Joe Recker, Portland State University, October 4, 2006

Overview

The Cully Association of Neighbors handed the survey out at the annual clean-up event in May. At this event, 134 surveys were completed. In June, 1,000 surveys were mailed by the City to a random selection of single-family and apartment units in the Cully neighborhood. The cover letter and surveys were in both Spanish and English. The mailing included a business-reply, postage-paid envelope that went to PSU's Center for Urban Studies. As of the end of July, 208 surveys were completed from the random sample mailing, including three in Spanish. This is 22% of the surveys that were delivered (subtracting 60 surveys that were returned as undeliverable). This is a good response rate for a general, mail-out survey with no follow-up. There was a lower response rate from surveys sent to apartments. The mail-out survey was a collaborative effort between the City and PSU, with the City copying and mailing the survey and PSU paying for the return postage and doing the data entry and analysis.

The results below are reported separately when there were differences between the two groups (Clean-up respondents vs. Mailing respondents).

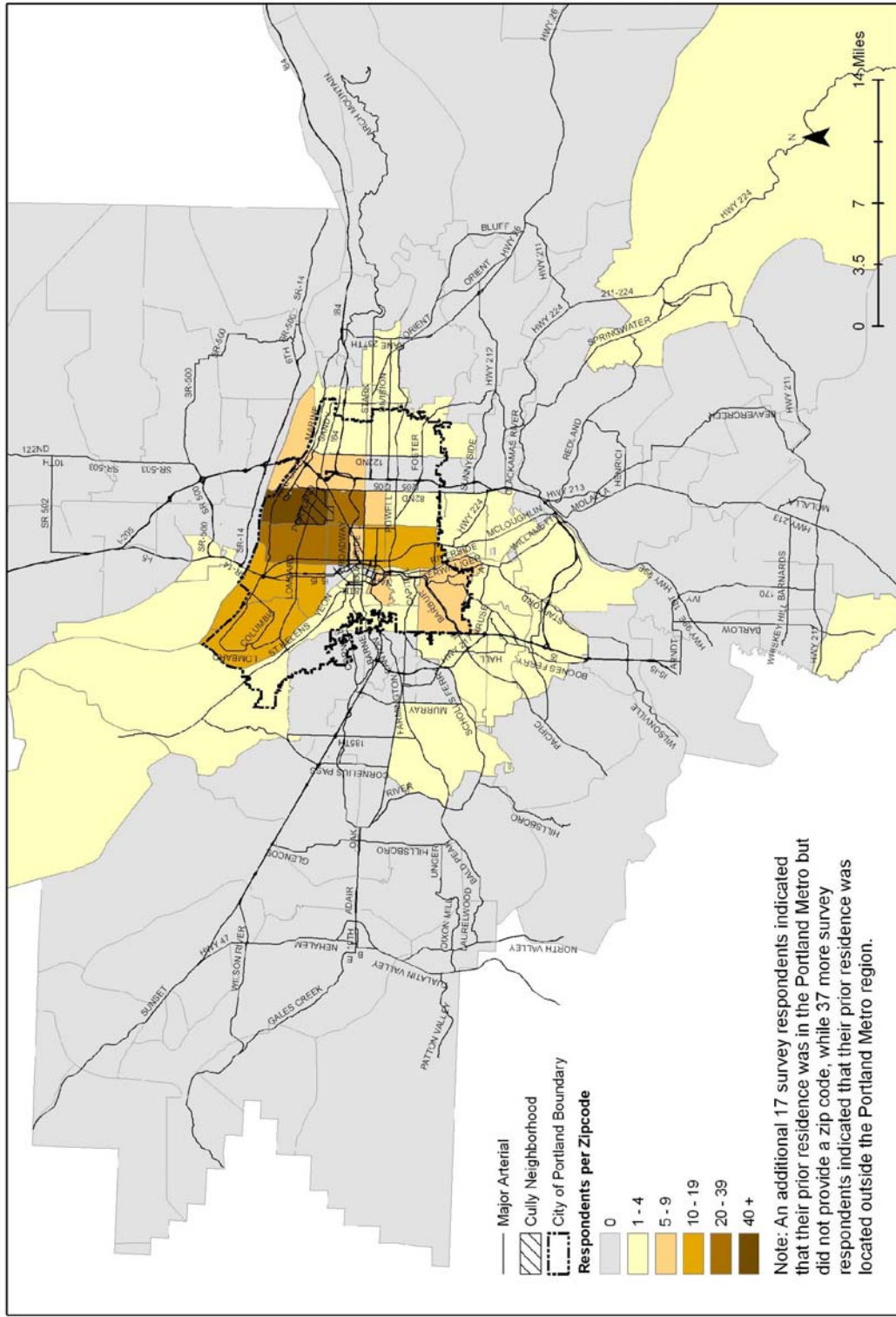
Responses to questions

How long have you lived in your current home?

	% of all respondents
1 year or less	14%
>1 year to 2 years	8
3-5 years	16
6-10 years	19
11-20 years	20
21 or more years	23
N	334

Before moving to your current home, where did you live? Please provide the zip code of your previous home. See map below for responses.

Prior Residence of Cully Survey Respondents by Zipcode in Portland Metro Area



Why did you move to the Cully neighborhood?

Open-ended question. Responses categorized. Multiple responses allowed, so total is greater than 100%.

	% of all respondents
Affordable	39%
Bought house	18
Liked home	17
Big Yard	14
Liked neighborhood	10
Other	10
Grew up in neighborhood	7
Quiet	6
Proximity to work	6
Proximity to friends/family	4
Rural/Country feeling	4
Diversity	3
Good investment	2
Proximity to shopping	2
Proximity to downtown	1
Proximity to schools	1

In general, how do you rate the Cully neighborhood on the following categories?

	Very Good (1)	Good (2)	Neither good nor Bad (3)	Bad (4)	Very Bad (5)	Avg. score
Quality of life in the Cully neighborhood						
Clean-up respondents	15	54	28	4	0	2.2
Mail respondents	8	50	33	10	0	2.5
All respondents	11	51	31	8	0	2.4
Physical condition of housing						
Clean-up respondents	8	45	39	8	0	2.5
Mail respondents	3	36	42	19	1	2.8
All respondents	5	39	41	14	1	2.7
Closeness of parks or open spaces						
Clean-up respondents	18	45	15	15	7	2.5
Mail respondents	12	36	24	20	9	2.8
All respondents	15	40	21	18	8	2.7
Quality of parks or open spaces						
Clean-up respondents	15	49	21	9	6	2.4
Mail respondents	13	33	34	14	7	2.7
All respondents	14	39	28	12	7	2.6
Access to employment						
Clean-up respondents	16	39	35	9	2	2.4
Mail respondents	8	34	43	12	3	2.7
All respondents	11	36	40	11	2	2.6
Access to grocery shopping						
Clean-up respondents	33	50	12	5	0	1.9
Mail respondents	26	53	15	5	2	2.0
All respondents	28	52	14	5	1	2.0
Access to other types of shopping and services						
Clean-up respondents	11	49	29	9	2	2.4
Mail respondents	8	33	34	23	2	2.8
All respondents	9	40	32	18	2	2.6
Smoothness of streets						
Clean-up respondents	2	28	29	28	14	3.2
Mail respondents	3	22	29	30	16	3.4
All respondents	3	24	29	29	15	3.3
Sidewalks						
Clean-up respondents	3	21	22	27	27	3.5
Mail respondents	2	11	25	25	35	3.8
All respondents	3	15	24	26	32	3.7
Library						
Clean-up respondents	16	40	31	9	5	2.5
Mail respondents	7	29	33	19	12	3.0
All respondents	10	33	32	15	9	2.8

	Very Good (1)	Good (2)	Neither good nor Bad (3)	Bad (4)	Very Bad (5)	Avg. score
Animal control						
Clean-up respondents	8	33	43	12	5	2.7
Mail respondents	3	26	48	17	7	3.0
All respondents	5	28	46	15	6	2.9
Services to seniors						
Clean-up respondents	5	24	60	9	2	2.8
Mail respondents	1	15	72	7	4	3.0
All respondents	3	19	68	8	3	2.9
Frequency of transit service						
Clean-up respondents	18	43	28	8	2	2.3
Mail respondents	15	47	28	7	4	2.4
All respondents	16	45	28	7	3	2.4

How safe do you feel...

	Very Safe (1)	Safe (2)	Neither safe nor unsafe (3)	Unsafe (4)	Very unsafe (5)
walking alone during the day in your neighborhood?					
Clean-up respondents	34	52	11	2	1
Mail respondents	31	45	18	5	2
All respondents	32	48	15	4	1
walking alone at night in your neighborhood?					
Clean-up respondents	11	27	29	28	5
Mail respondents	6	14	30	35	14
All respondents	8	20	30	32	11
waiting for a bus during the day?					
Clean-up respondents	26	53	16	4	1
Mail respondents	26	43	23	7	2
All respondents	26	47	20	6	1
waiting for a bus at night?					
Clean-up respondents	10	24	30	24	12
Mail respondents	5	11	28	32	23
All respondents	7	16	29	29	19

Do you live on an unimproved or unpaved street?

26% Yes
74% No

How is stormwater managed on your property?

47% Stormwater is managed on property
29% Stormwater is connected to sewer
24% Don't know

Did any of the following events happen at your household in the past 12 months?

(approximately 45% of respondents answered this question)

	Someone broke into, or attempted to break into, a car or truck belonging to and parked at my household	My home was broken into or burglarized
No	55%	88%
<i>Yes, ___ times in the past 12 months</i>		
One	31	10
Two	7	0
Three	2	0
Four or more	4	2

Please indicate whether you agree or disagree with the following statements.

	% of respondents					
	Strongly agree	Agree	Neither	Disagree	Strongly disagree	Don't know
New infill housing is improving the Cully neighborhood						
Clean-up respondents	4	19	34	16	21	6
Mail respondents	3	16	21	23	29	8
All respondents	3	17	26	20	26	8
New industrial development is improving the Cully neighborhood						
Clean-up respondents	1	18	39	24	10	8
Mail respondents	1	8	34	24	17	17
All respondents	1	12	36	24	14	14
New commercial development is improving the Cully neighborhood						
Clean-up respondents	4	41	37	7	6	5
Mail respondents	7	28	33	13	8	11
All respondents	6	33	35	11	7	9
There are too many adult entertainment businesses located in Cully						
Clean-up respondents	39	30	21	5	2	3
Mail respondents	38	23	22	6	3	7
All respondents	38	26	22	6	2	6
There are too many social services located in Cully						
Clean-up respondents	3	12	45	22	11	8
Mail respondents	4	7	39	20	11	20
All respondents	4	9	41	21	11	15
The Cully neighborhood is getting safer						
Clean-up respondents	2	23	43	17	7	9
Mail respondents	3	23	32	19	15	9
All respondents	2	23	36	18	12	9
The diversity of the Cully neighborhood makes it a better place to live						
Clean-up respondents	10	44	32	9	3	2
Mail respondents	17	36	21	13	8	5
All respondents	14	39	25	11	6	4
I am willing to help pay part of the costs to pave the streets in Cully						
Clean-up respondents	6	13	31	24	20	6
Mail respondents	3	17	15	24	35	6
All respondents	4	16	21	24	29	6

Have you visited the Whitaker Ponds?

27% Yes (36% of Clean-up respondents and 21% of mail respondents)
73% No

Have you visited the Rigler Community Garden?

34% Yes (27% of Clean-up respondents and 39% of mail respondents)
66% No

Have you attended a Cully Association of Neighbors meeting in the past 2 years?

22% Yes (33% of Clean-up respondents and 16% of mail respondents)
78% No

Do you read the Cully Association of Neighbors newsletter?

83% Yes (85% of Clean-up respondents and 83% of mail respondents)
17% No

Questions about children

Do you have children under 18 years old living in your household?

29% Yes
71% No

Do your children walk to school once a week or more?

12% Yes
88% No

Why don't your children walk to school? (check as many as apply)

- 44% The trip is too long
- 21% I am concerned about their safety in traffic
- 29% I am concerned about people they may encounter on the way
- 27% Other
- 21% Child too young for school

Please indicate whether you agree or disagree with the following statements.

	% of respondents with children				
	Strongly agree	Agree	Neither	Disagree	Strongly disagree
There are safe places nearby for my children to play	9	46	18	21	7
My children are safe playing outside without me watching	5	38	19	24	15
My children are safer when my neighbors are home	16	51	26	5	3
I let my children ride their bicycles on my street	9	48	20	13	11
The Cully neighborhood is a good place to raise children	8	39	32	12	9

What three things do you like best about the neighborhood?

Open-ended question. Responses categorized. Multiple responses allowed, so total is greater than 100%.

	#	% of all respondents
Neighbors	118	42%
Quiet	66	24%
Big yards/lots	63	23%
Proximity to businesses (specific ones often listed)	51	18%
Diversity	49	18%
Local businesses	41	15%
Convenient location	36	13%
Proximity to freeways	35	13%
Other	28	10%
Parks	27	10%
Affordable	26	9%
Trees	25	9%
Rural/country feel	22	8%
Proximity to downtown	20	7%
Transit connections	19	7%
Proximity to work	18	7%
Proximity to airport	17	6%
Housing	15	5%
Neighborhood is improving	13	5%
Low traffic	13	5%
Clean	12	4%
Schools	9	3%
Safe	8	3%
Bike friendly	5	2%
Proximity to public services	4	1%

What three things do you like least about neighborhood?

Open-ended question. Responses categorized. Multiple responses allowed, so total is greater than 100%.

	#	% of all respondents
Drugs/criminal use/activity	103	36%
Lack of sidewalks	85	30%
Street condition	69	24%
Poorly maintained properties/homes	63	22%
New housing	40	14%
Other	39	14%
Speeding	33	12%
Adult entertainment	32	11%
Disrespectful/unfriendly neighbors	32	11%
Quality/Selection of businesses	28	10%
Apartments	27	9%
Noise	25	9%
Litter	20	7%
Distance to retail	19	7%
Lack of and distance to parks	19	7%
Abandoned vehicles	17	5%
not enough parking	17	6%
Rental housing	14	5%
Heavy traffic	12	4%
Killingsworth	11	4%
Loitering	10	4%
Airport Noise	10	4%
Public schools	9	3%
5-point intersection	8	3%
Transit connections lacking	8	3%
Industry	5	2%
no community center	5	2%
Distance from downtown	3	1%
social services	3	1%

What do you think is missing from the neighborhood?

Open-ended question. Responses categorized. Multiple responses allowed, so total is greater than 100%.

	#	% of all respondents
Retail	43	25%
Parks	39	23%
Sidewalks	39	23%
Community services/events/facilities/involvement	36	21%
Restaurants	24	14%
Law enforcement	21	12%
paved streets and sidewalks	17	10%
Other	13	8%
Traffic controls	9	5%
Respectful neighbors	8	5%
trees	5	3%
Youth center	5	3%
home ownership	5	3%
Paved streets/street improvements	4	1%
library	4	2%
Bike paths	4	2%
Bike routes	4	2%
Street lights	3	2%
better transit service	3	2%
Farmers market	3	2%
Schools	3	2%
Housing	2	1%
Planning/vision	2	1%
storefront improvements	2	1%
Diversity	1	1%

Respondent profile

Gender

62% Female
38% Male

Age

18% 18-34 years
49% 35-54 years
25% 55+
8% did not respond

Ethnicity or race

84% White
4% African American
3% Asian
2% Hispanic
2% Pacific Islander
1% Native American
1% Other
4% Multiple responses

Including yourself, how many people live in your household?

16% One
45% Two
19% Three
14% Four
6% Five or more

Current employment

54% employed full-time
6% employed part-time
8% self-employed
14% retired
1% student
1% not currently employed, but looking for work
2% not currently employed outside the home
1% other
12% multiple responses

Approximate yearly household income before taxes

8% Less than \$15,000
8% \$15,000 - \$24,999
16% \$25,000 - \$34,999
21% \$35,000 - \$49,999
29% \$50,000 - \$74,999
11% \$75,000 - \$99,999
7% \$100,000 and over

Respondents were asked to indicate the intersection closest to their home. The following map shows a fairly dispersed geography of respondents within the Cully neighborhood.

Distribution of Cully Survey Respondents

