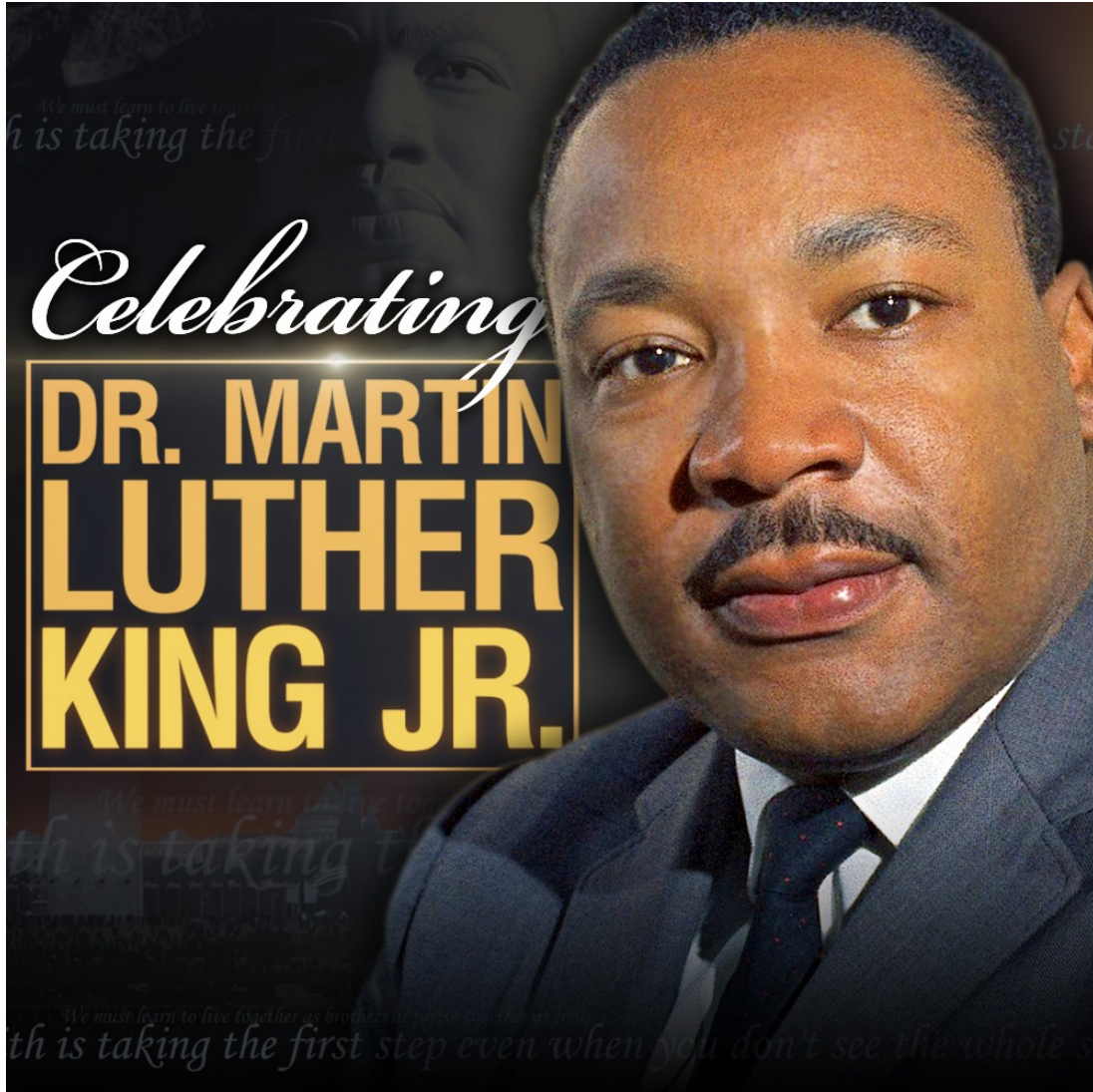


CAN News



Our monthly Board meeting will be taking place next Tuesday, January 23rd. You can find the details of our monthly meetings at the bottom of every newsletter.

Our first CAN Fundraiser is set to take place tomorrow, January 16th at Oakshire. We do not know if they will be open because of the weather. If they are open and you are able to go, please do so!

January CAN General Meeting minutes (Draft)
[HERE](#)

Oakshire Inspires

\$1 FROM EVERY OAKSHIRE CORE PINT & **10% OF BREWFARE FOOD SALES** WILL BE DONATED TO:



CULLY ASSOCIATION OF NEIGHBORS

Central Northeast Neighbors
 4415 NE 87th Avenue
 Portland, Oregon 97220

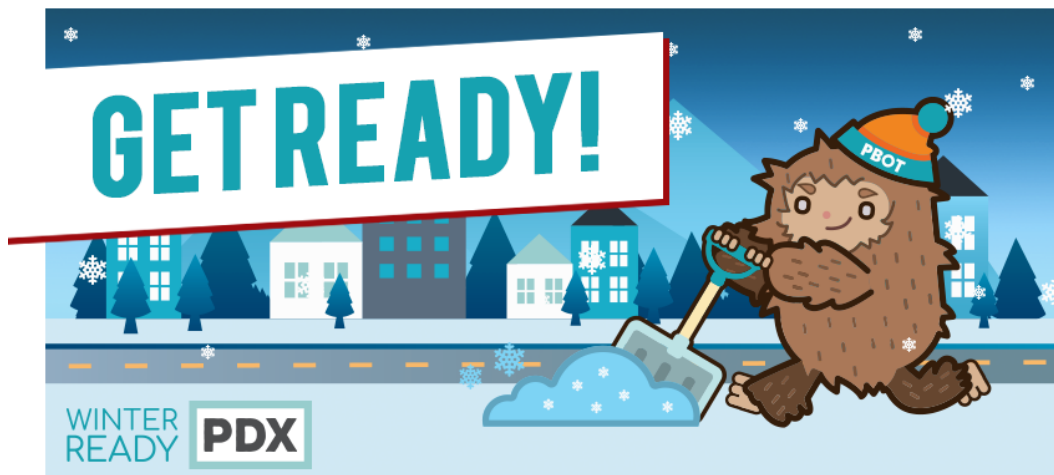
THE CULLY ASSOCIATION OF NEIGHBORS SEEKS TO ENHANCE THE PHYSICAL AND SOCIAL LIVABILITY IN THE NEIGHBORHOOD THROUGH OPEN LINKS OF COMMUNICATION AND LIAISON BETWEEN AND WITHIN THE NEIGHBORHOOD, GOVERNMENTAL AGENCIES, AND OTHER NEIGHBORS.

JAN
16



5013
NE 42ND AVE
PDX

Community Updates



(Jan. 15, 2024) The Portland Bureau of Transportation (PBOT) urges the public to avoid travel all day Tuesday, as a forecast of up to half an inch of freezing rain could make travel hazardous across the city and the metropolitan area. Freezing rain could start as soon as 10 a.m. on Tuesday and hazardous conditions may linger into Wednesday morning.

The **National Weather Service** has advised PBOT that forecasters are highly confident that the area will see between two-tenths and a half inch of ice from the storm. There is a possibility of a trace to a quarter inch of snow for areas above 500 feet above sea level briefly, just before the freezing rain arrives. Freezing rain could make surfaces such as sidewalks, streets and bridges slick and treacherous. It also adds weight to trees, felling trees and limbs and causing power outages.

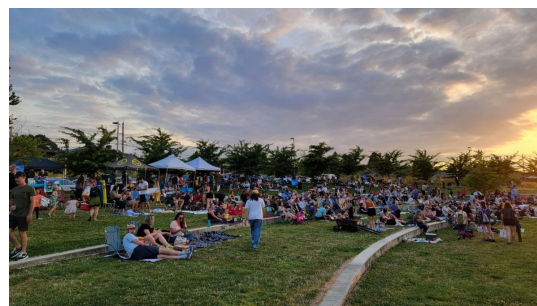
This comes after the weekend wind and snow storm toppled hundreds of trees and left many others weakened and vulnerable. As of noon on Monday, there were more than 40 road closures in Portland caused by downed trees or power lines.

In advance of the storm, the **City of Portland** announced Monday afternoon that city offices will be closed. Only essential employees, such as PBOT crews and first responders, will be required to work in person.

All forecasts come with uncertainty and they can change in the days and hours leading up to a storm event.

Community Activities Funds Available

The Office of Community and Civic Life supports neighborhood associations and other community organizations through the Community Activities Fund (CAF). The CAF reimburses volunteer-run organizations in the southwest, north, east neighborhood district for money spent on community-building and civic engagement activities. Eligible organizations in these areas are invited to apply.



Applications will be open from September 1, 2023, through May 31, 2024, or until funds are gone, whichever comes first. This is a reimbursement program for expenses incurred from June 1, 2023, and May 31, 2024.

[Learn More](#)

Neighborhood and District Profiles Finalized

Civic Life has partnered with Portland State University (PSU) Population Research Center to develop data-rich neighborhood profiles. This data sharpens our understanding of the unique

changes and issues occurring in each neighborhood. The neighborhood profiles show information like:

- How your neighborhood has grown since 2010;
- What percentage of people speak a language other than English;
- How many of your residents are rent burdened; and
- How many new housing units were added to your neighborhood.

These neighborhood profiles will help the City and our community partners improve outreach, set programmatic priorities unique to each neighborhood and help Portlanders in need.

View the Neighborhood Profiles

Do you know someone struggling financially because the City of Portland ordered their vehicle towed?

The Ombudsman's Office is investigating the City's towing policies and practices. The office regularly hears complaints from economically vulnerable Portlanders who struggle to pay the cost for towing, storing, and recovering their vehicle and want to connect with more people experiencing this. Email Deputy Ombudsman Tony Green at Tony.Green@PortlandOregon.gov.

The Ombudsman's Office is an advocate for fairness, justice, transparency, equity, and accountability in City services. This investigation is part of ongoing efforts to investigate systemic issues where the City's actions may result in unfair treatment and harm.

Learn More

Preparing for severe weather travel

Stay informed. Sign up at [Public Alerts](#) for emergency notifications from all regional agencies via text, email, or phone. Go to [PBOT's Winter Weather Center](#) to track real-time weather, traffic, road closures, and plow information. Sign up for [PBOT alerts](#) via text or email.

Build a severe weather travel plan. Before the inclement weather hits, plan ahead for how you'll travel in severe weather. Our "[Get Home Safe](#)" travel checklist provides essential tips for taking transit, walking, biking, and driving in winter weather. Property owners, tenants and businesses should have supplies on hand, such as ice melt and snow shovels to clear sidewalks as well as pathways across their driveways.

No time for inaction, find some traction. Traveling in snow and ice can be challenging, and at times dangerous and slippery. Immediately after snow and ice, Portlanders are encouraged to limit their travel and stay close to home. Traction devices for your shoes will help navigate your neighborhood streets.

Have you purchased chains yet for your vehicle? Take the time to practice putting them on your car before you get stuck! You'll be glad you did. PBOT has additional [winter weather travel travels for pedestrians and people biking and driving](#).



Participate, Engage, Volunteer!

Become a Volunteer at Columbia Slough

Share your talents and passion to help protect and enhance the Columbia Slough Watershed. See ongoing Volunteer opportunities and visit our events calendar often!

- **Want to get out on the water?**
 - **Paddle Team** members support event coordination and guide community members on tours through the Slough.
- **Calling all plant enthusiasts.**
 - We host **Volunteer Stewardship** events year-round. Delicious coffee and snacks provided.
- **Empower the next generation of environmental stewards.**
 - Assist **Slough School** educators year round in the delivery of hands-on science programs.
- **Take your stewardship a step further.**
 - Join a **Cleanup** or adopt your own stretch of the Slough and conduct your own Cleanups!



[Learn More Here](#)

Local Tree Care Providers Workshop

Friday, January 26 from 8:30 am - 11:30 am Online on Zoom

Calling all tree care professionals! If you work on trees within the city limits of Portland, then this workshop is for you. Learn about different kinds of tree permits and how to submit applications. Urban Forestry staff will be there to answer your questions. After completing the workshop, companies that meet the qualifying criteria may be placed on the City's website as a Local Tree Care Provider. ISA CEUs may be available.

[Register here](#)

Nominations for Tree Heroes Wanted

Do you know someone or an organization who has made significant contributions to urban forestry in Oregon through tree stewardship, community outreach, education, or investment in

urban trees and forests? This is an opportunity to recognize them for their amazing efforts. Nominations for the Oregon Urban and Community Forestry Award are being accepted until February 15th, 2024.

[Apply here](#)

Join an Advisory Body!

Joining an advisory body is a way for Portlanders to lend their expertise and personal or professional experience to the City of Portland. As an advisory body member, you will work closely with community members and City of Portland liaisons to impact policies and programs.

Noise Review Board Construction Industry Representative - Closes Sunday, January 21
[Learn more about member responsibilities and apply here!](#)

Portland Utility Board - Closes Monday, January 22
[Learn more about member responsibilities and apply here!](#)

Electrical Code Board of Appeal - Closes Wednesday, January 31
[Learn more about member responsibilities and apply here!](#)

Plumbing Code Board of Appeal - Closes Wednesday, January 31
[Learn more about member responsibilities and apply here!](#)

Ongoing CAN Events

CAN General Meetings

Tuesday, February 13, 2024 at Grace Presbyterian, 6025 NE Prescott

[Join Zoom](#) @ Meeting ID: 892 9705 9428 Passcode: 795423

General Meetings are every 2nd Tuesday, monthly from September through June. CAN Members are all persons who live, work, hold a business license, or own property within the boundaries of Cully.

CAN Transportation & Land Use (TLC) Meeting

Tuesday, January 16, 2024

[Join Zoom](#) @ Meeting ID: 892 9705 9428 Passcode: 795423

CAN Transportation & Land Use (TLC) Meetings are on the 3rd Tuesday, monthly and/or as-needed from 6:30-8 pm. More [Land Use and Zoning](#) info

CAN Board Meeting

Tuesday, January 23, 6:30 - 8:30 pm

[Join Zoom](#) @ Meeting ID: 892 9705 9428 Passcode: 795423

CAN Board Member Meetings every 4th Tuesday, monthly year-round from 6:30-8:30 pm

Community Resources

Check out all these other events happening around the neighborhood.

- [Alder Commons](#)
- [Hacienda CDC](#)
- [Living Cully](#)
- [Naya](#)

Living Cully maintains a list of **community resources**. Let us know what we're missing!

